

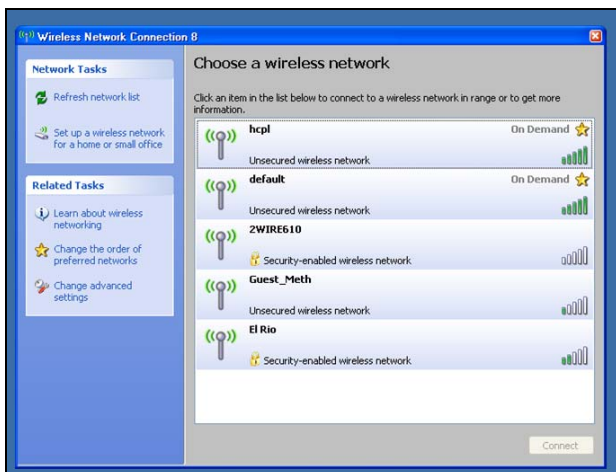
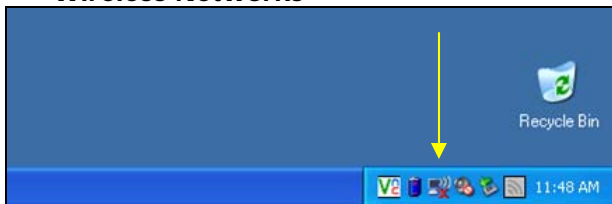
Follow these steps to connect the library's wireless network:

### Settings for Public wireless at HCPL Libraries.

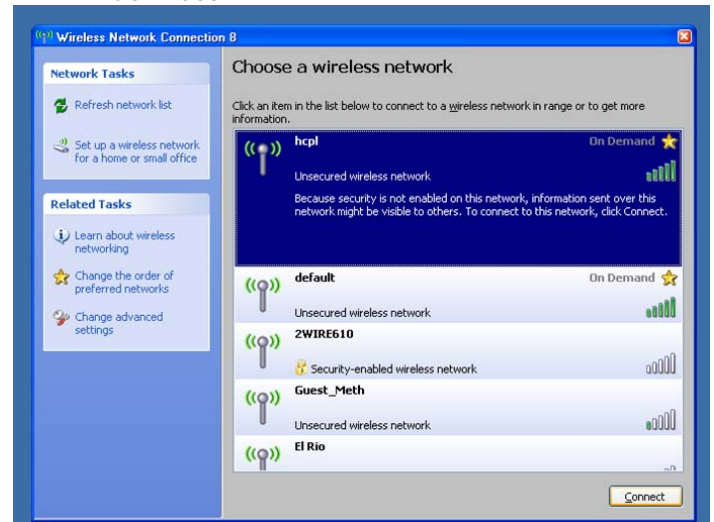
- SSID (network name) = default or hcpl
- WEP = disable WEP encryption
- Mode or Network Type = Infrastructure mode or access point
- Click on **Start, Connect To, then select Show All Connections**
- Right Click on **Wireless Network Connection**
- Select **View Available Wireless Networks**

OR

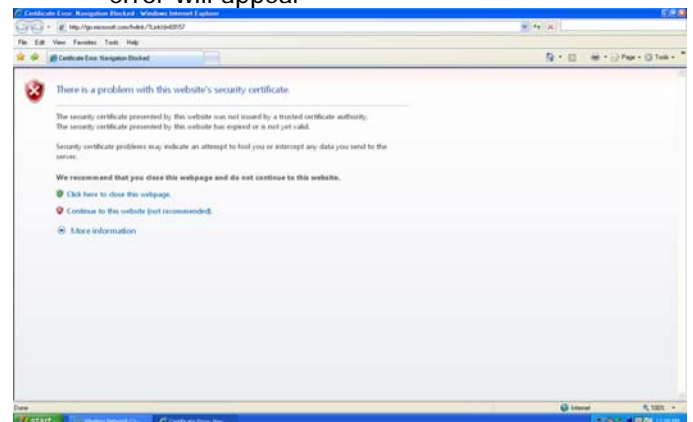
- Right click on the wireless icon in the bottom right system tray and choose **View Available Wireless Networks**



- When the Wireless Network Connections box comes up, click on the network you want to connect to, **default** or **hcpl**, then click on **Connect**



- Open the browser and the following Certificate error will appear



- Click the second option that says "Continue..." and you will be redirected to the following page



- Follow the directions indicated to log in and access the internet.

**\*\* Please return to a staff member when done \*\***

(Information on other side)

## Troubleshooting and Hints:

---

- Make certain you do not have any **static IP settings** on your wireless interface.
- If you are using **wireless interface dedicated software**, disable the existing connection profile and create a new one using "default" as your SSID. [Follow instructions below]
- Disable any **pop-up blockers**, at least initially.
- If you have a **personal firewall** (Symantec, Zone Alarm, BlackIce and such), make sure it is not blocking the wireless network.
- If you use **proxy servers** for school or work, make sure to remove these settings. If you have the **Automatically Detect Settings** option checked, make sure it is **NOT** checked.
- If you are using Dial-Up at home, make sure you select **Never Dial a Connection** before connecting to the wireless network. When you go back to your dial up connection, change the setting back to **Always Dial My Default Connection**.
- If you have a **secured wireless network** at home or work, make a note of your security settings and then disable them. When you connect back at home or work, enable them again.

**\*\* Please return to a staff member when done \*\***  
(Information on other side)